

A PLACE TO GROW



GT GLOBAL
TH TRANSPORTATION
HUB

Saskatchewan – The bread basket of North America

Located in the heart of the Canadian prairies, Saskatchewan has some of the most productive land in the world, laying claim to about 40 per cent of Canada's farmland.

Saskatchewan is also home to the Global Transportation Hub, a self-governing inland port offering easy shipping access to markets across the continent and around the world.

Locating food processing and manufacturing at the GTH removes the majority of the logistical costs related to getting these inputs to processing plants. Finished products can be shipped from a location designed for that very purpose - logistical excellence and ease of transportation.





The GTH is logistically superior for clients in all aspects of supply chain management and logistics – a key attraction for anchor clients, CP Rail and Loblaw.

Saskatchewan's Global Transportation Hub

A place to grow

The Global Transportation Hub (GTH) connects Saskatchewan to the world – and the world to Saskatchewan's industry and resources. As Canada's only self-governing inland port authority, the GTH has an unparalleled ability to efficiently provide access to affordable land, purpose-built infrastructure, and transportation and logistics partners. These benefits make it possible to move goods by truck or rail to markets across North America and ports that service the world.

The GTH also offers access to rich agricultural resources – grown in pristine conditions in the "Land of Living Skies." With 1,800 acres of greenfield land available to host processing facilities, the GTH is an ideal location to add value to Saskatchewan-grown crops and to produce food ingredients in demand around the world.

We're exploring new ways to create value by bringing together partners in agriculture, transportation and industry – partners who recognize Saskatchewan and the GTH as a place to grow.



On average, inbound and outbound container shipments between the GTH and Vancouver are 20% cheaper than between Manitoba and Vancouver, saving millions of dollars per year in shipping costs.

Local access; global reach

Saskatchewan's reputation was built on agriculture; on the efforts of generations of farmers committed to producing healthy crops to help feed the world. Today, our province accounts for 40 per cent of Canada's farmland and is among the world's leading producers of wheat, canola, lentils, flax, barley and other crops.

The GTH sits at the hub of this agricultural hotbed, with 80 per cent of Saskatchewan's farmers within a four-hour drive of our property. Developing processing and manufacturing facilities at the GTH makes it possible to access the best of our province's resources fresh from the field.

The GTH is also home to the Canadian Pacific (CP) Rail's newest intermodal facility and sits adjacent to the Regina Bypass project, scheduled for completion in 2019. Our access to transportation partners and routes makes it possible to load goods for direct delivery to shipping ports on either coast or to access 60 million consumers within a day's drive.



Located adjacent to CP Rail's intermodal facility, the massive Loblaw distribution centre at the GTH receives some 85 containers of goods via rail per week from eastern Canada, Europe, and Asia and also moves 3,600 inbound and outbound truck shipments weekly.

Growing, processing, distribution...

Agriculture is the root of Saskatchewan's economy making the GTH the ideal location for agri-food processing and value-add production. The GTH offers:

- Direct access to CP Rail's intermodal facility and a worldwide container system
- A logistics community made up of long and short haul transport companies, processing, warehousing and distribution businesses
- Ready to develop greenfield land close to the world's most recognized and reliable supply of safe, high-quality grains, oilseeds, pulses and livestock
- Some of the most competitively-priced industrial land in western Canada
- Access to high-quality, reliable municipal water
- Infrastructure to support heavy water and wastewater users including wet pulse fractionation
- Reliable, affordable utilities
- Relationships with industry-leading research facilities and agriculture groups
- Ready-built infrastructure designed to meet the needs of heavy-haul transportation and logistics operations

Feeding the world

Saskatchewan exports more than \$1.6 billion in cereal grains, oilseeds, pulses and edible oils. In 2017, Saskatchewan was responsible for:

41%

of the world's
lentil exports

36%

of the world's
pea exports

33%

of the world's
durum
exports

28%

of the world's
mustard
exports

22%

of the world's
flaxseed
exports

Well over

20%

of the world's
canola seed,
meal & oil
exports
respectively

Saskatchewan has enormous production capacity, and as the world's population grows, we are an increasingly important food supplier.





We make it easy

Agribusinesses need a home that recognizes the opportunities and challenges in breaking new ground, smoothing regulatory hurdles, and in making long-term growth an achievable dream. Our business development experts offer a variety of support services include facilitation of labour and skills training, pathfinding market development, helping foster industry relationships, and most importantly a steadfast commitment to assisting clients in driving ROI.

Value-added processing incentives

Saskatchewan is recognized as one of Canada's most "business-friendly" environments, with competitive rates and incentives for value-added agricultural processing. Some of these incentives include:

- Saskatchewan Valued-Added Agricultural Incentive
- Saskatchewan Manufacturing and Processing Profits Tax Reduction
- Saskatchewan Manufacturing and Processing Exporter Tax Incentive
- Manufacturing and Processing Investment Tax Credit
- Research and Development Tax Credit
- Saskatchewan Commercial Innovation Incentive



As a self-governing, authority, the GTH is cutting red tape and making it easier to do business in Saskatchewan.

Breaking down barriers

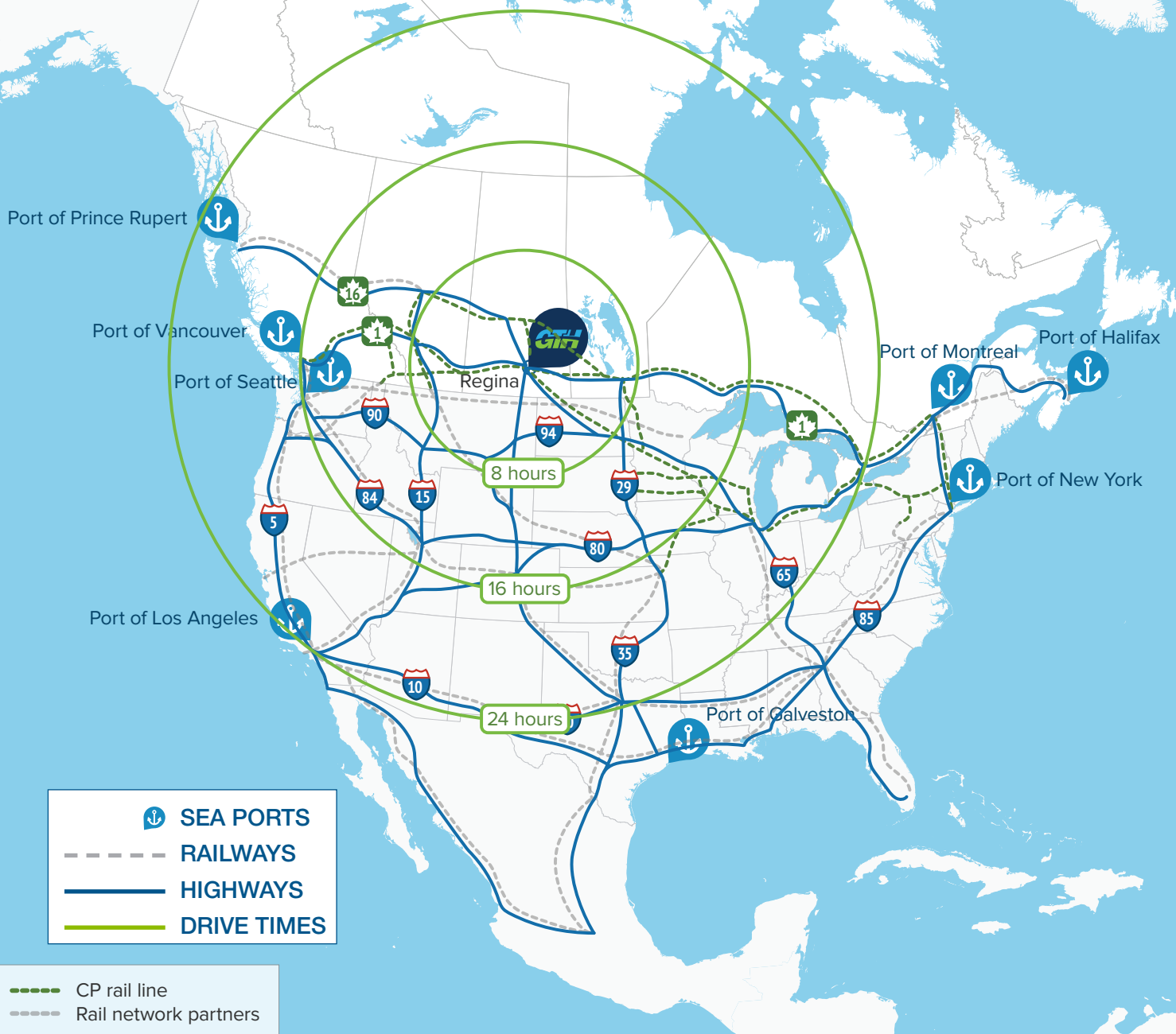
As Saskatchewan's only designated Foreign Trade Zone (FTZ), the GTH offers foreign investors single-window access to Canada's duty and tax relief programming. FTZ programs offer cash-flow and service benefits for our clients who may be interested in value-add agricultural processing activities or light manufacturing. Some of those programs include:

- **Duty deferral** – duties are waived up front or rebated later
- **Sales tax relief** – exemption from federal and provincial sales tax
- **Exporters of processing services** – relieves participants of obligation to pay federal and provincial sales tax on imports belonging to non-residents
- **Export distribution centre** – imported goods processed to add limited value before exporting exempt from federal and provincial taxes
- **Customs bonded warehouse** – sales tax and duty-free storage/distribution facilities

For more on the benefits of Foreign Trade Zones for international businesses, download the Government of Canada's brochure *Canada's tax and duty advantages: Enjoy the benefits of Foreign Trade Zones*. Canada Border Services also has a great video on Trade Incentive Programs available.

GTH Location Advantage

Reach 60 million consumers within a day's drive of the GTH, and over 270 million within two days.



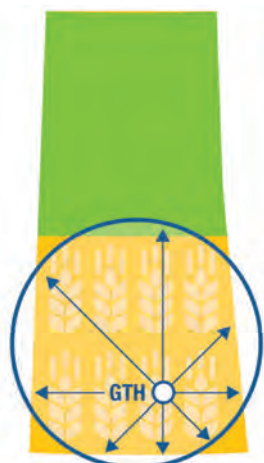


The GTH is a partner of the Protein Industries Canada (PIC) super cluster and look forward to supporting agri-food innovation across the prairie provinces.

Strength in numbers

The GTH believes in partnerships and attracting like-minded companies with a shared commitment to economic development and international partnerships. This has helped attract industry partners warehousing, distribution, transportation and trade.

We see new opportunities to attract new clusters, specifically in the field of agricultural processing. Our expansive land base and autonomous governance model makes it possible to explore solutions that allow for the efficient development of facilities and infrastructure that can help turn Saskatchewan crops into the world's supermarket.



4HR Drive to 80% of Saskatchewan Farms

Our ambition is to attract companies active in a global agri-food supply chain – from processing to storage and warehousing to transportation and delivery to customers around the world.

The GTH was designed to improve efficiency in areas that affect the success of companies involved in trade.

Major utilities are provided by government-owned Crown corporations ensuring competitive, stable utility costs. Electric power and natural gas lines are located at property boundaries and are available to industrial clients with a small connection fee. Reliable, high-quality, high-pressure municipal water is accessible, with infrastructure designed to accommodate looped water/sanitary service.

Food Processing Value Chain



CP Rail's intermodal yard, in operation since 2013, has the capacity to expand up to four times its current size to meet future demands. The rail company currently averages 60,000 container lifts annually.



With the 2019 completion of a \$1.88 billion bypass around the city of Regina, the GTH will have access to two national highway routes – the TransCanada and the Yellowhead – free from congestion and urban traffic.

Innovation, understanding and efficiency

The GTH is a unique enterprise, offering distinct advantages to industry partners pursuing opportunities for mutually beneficial economic growth.

Self-governing – The GTH operates as a municipality, with independent responsibility for land-use planning, development, regulation, governance, permitting and enforcement. This structure creates a one-stop approach, with a single point of contact to reduce time, uncertainty and cost for clients developing facilities.

Flexible property development – With 1,800 acres available for development, the GTH is able to accommodate the diverse needs of our clients – from large-scale facilities like the Loblaw warehouse and distribution centre to smaller support services like the Sterling Truck and Trailer repair and maintenance centre.

Purpose-built infrastructure – The GTH's road infrastructure is designed to meet the needs of large, high-volume carriers and includes more than five kilometres of extra-wide, double-lane roadways tailored for freight movement.

Foreign Trade Zone (FTZ) – As Saskatchewan's only FTZ, the GTH offers investors single-window access to Canada's duty and tax relief programming.



HL3401
V

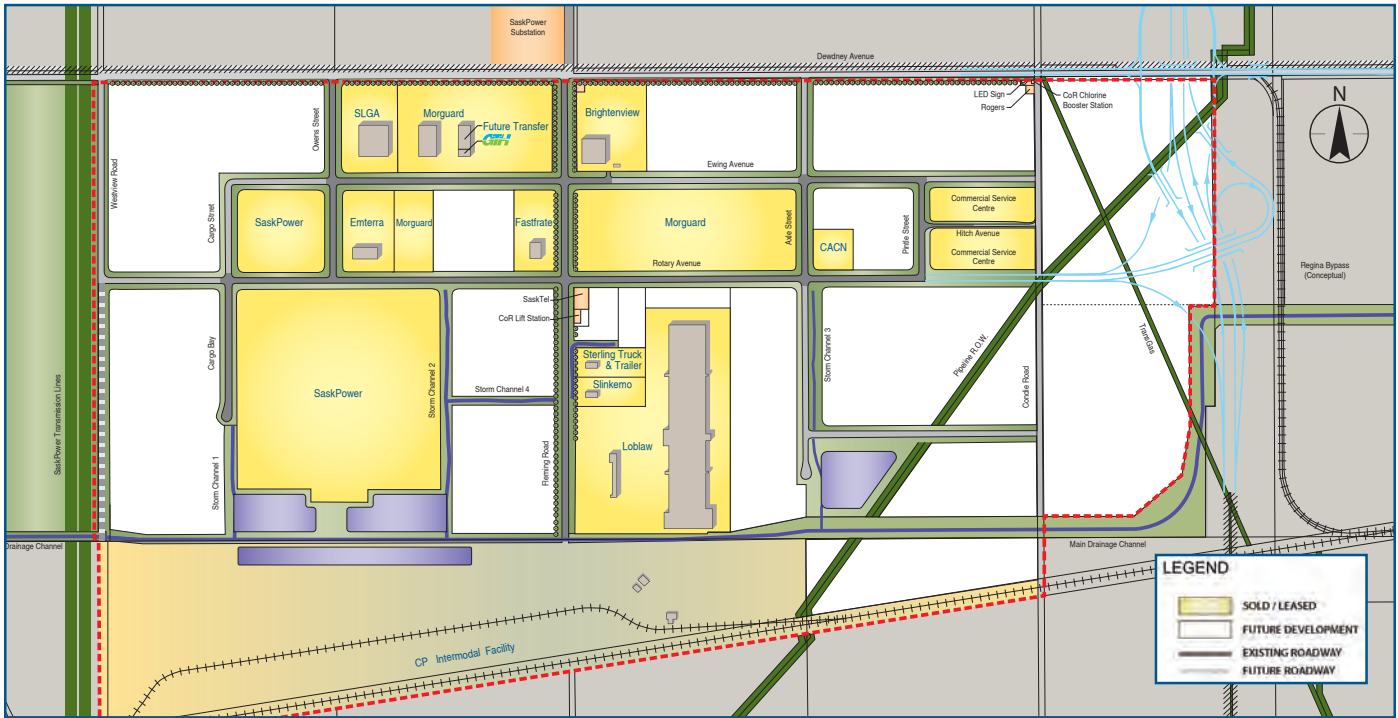
HL3501
8

HL3601
R

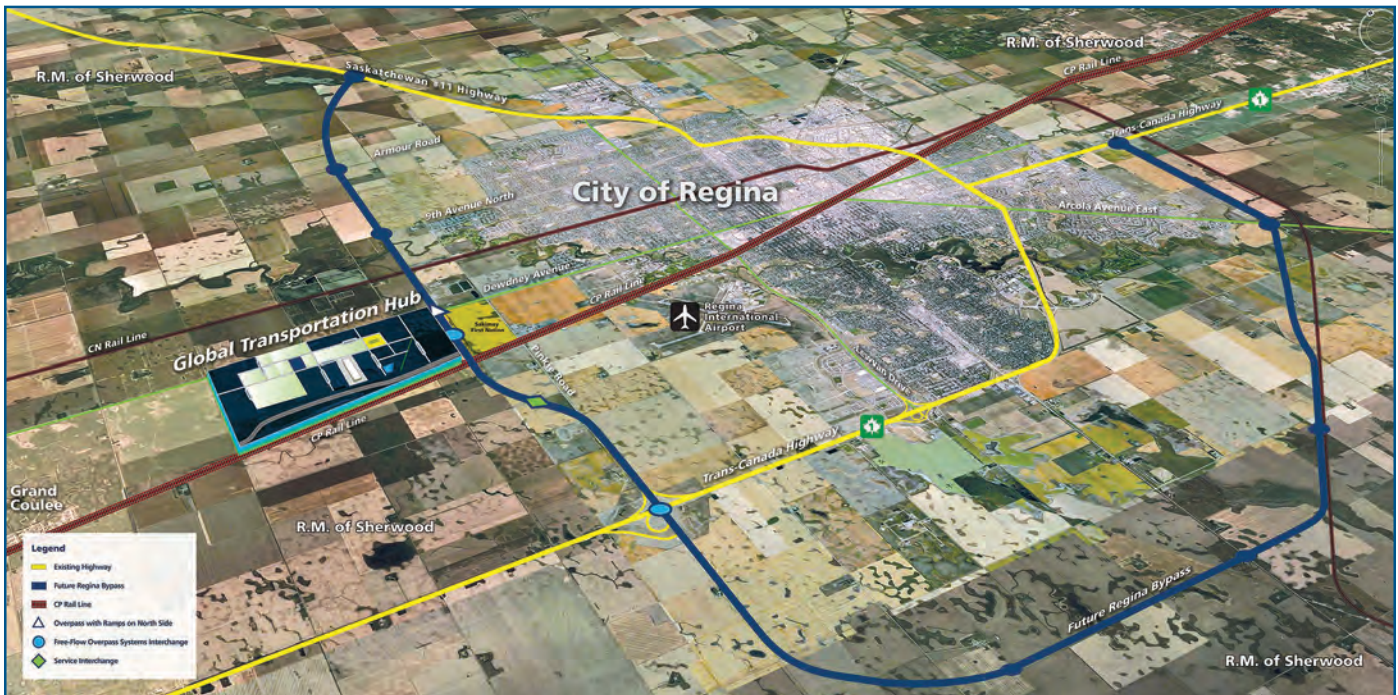
HL3
9

Loblaw located its 1-million-square foot distribution centre at the GTH, giving the retailer access to transportation partners that can reach its broad network of stores.

The GTH at a glance



The Regina Bypass



The future

A changing food industry around the globe is a unique opportunity for Saskatchewan – the heart of Canada’s bread basket. Agriculture is one of our primary resources in Saskatchewan. Increasing global demand for food, feed and fuel will require a growing value-added agriculture industry that supports primary production, technology and partnerships. The GTH is a critical piece to positioning Saskatchewan’s plan for growth.

Grow with us.





President's Choice.



New York Style
CHEESECAKES

GT GLOBAL
TRANSPORTATION
HUB

300-12222 Ewing Avenue
Regina, Saskatchewan S4M 0A1
T: 306.798.4762

THEGTH.COM

